



# THE ARMORY SHOW

SEPTEMBER 9-12  
JAVITS CENTER

**KAMBUI OLUJIMI**  
*When Monuments Fall*

ANNA ZORINA GALLERY

**Booth F4**

# ANNA ZORINA GALLERY

532 W 24 ST NYC NY 10011 TEL 212 243 2100

## KAMBUI OLUJIMI

### *When Monuments Fall*

September 9-12, 2021

Location: The Armory Show at Javits Center

Anna Zorina Gallery is pleased to feature Kambui Olujimi's *When Monuments Fall*, a selection of paintings and sculptures that interrogate the precarious position of monumentality. This new body of work contests the ideological and the symbolic manifestations of colonialism and intersects with current international conversations around the recontextualization, revision, and removal of monuments.

In Olujimi's large-scale watercolor paintings, monuments are in transition, broken or veiled. At their core, these paintings question how monuments participate in the construction and narratives of state power and supplant lived memories and histories. Olujimi's work problematizes the inability of the heroic monument to move beyond reinforcing dominant powers. While the current undoing and the removal of these monuments mark an important shift in our understanding of oppression and nationhood, this reckoning does not undo the figures' legacies of violence.

In his ceramic sculptures, Olujimi has reimagined municipal and royal stamps, incorporating teeth, hair and a humbler as a way to reintroduce the personal into a space that was once meant to obscure individual bodies. These seal matrices interrupt the symbolic with the corporeal, reminding us of a very real absence in the historic record.

Interdisciplinary artist KAMBUI OLUJIMI was born and raised in Bedford-Stuyvesant, Brooklyn and received his MFA from Columbia University in New York City. Olujimi's work has been exhibited at MoMA, Brooklyn Museum, MASSMoCA, and Yerba Buena. Internationally, his work has been featured at Museo Nacional Reina Sofia in Madrid, Kunsthal Rotterdam in the Netherlands, Kiasma Museum of Contemporary Art in Finland and Para Site in Hong Kong, among others.

His work is currently on view at The Cleveland Art Museum and will be shown in *The Obama Portraits Tour* at LACMA this November. His work is in multiple collections including the Studio Museum in Harlem, Birmingham Museum of Art, Brooklyn Museum of Art, Newark Museum, Orange County Museum of Art and Nasher Museum of Art.

For press inquires, please contact Jacqueline WayneGuite,  
Olu & Company, [jacqueline@olucompany.com](mailto:jacqueline@olucompany.com).

For further information, please contact Marie Nyquist at 212-243-2100  
or via email at [marie@annazorinagallery.com](mailto:marie@annazorinagallery.com)



# ANNA ZORINA GALLERY

532 W 24 ST NYC NY 10011 TEL 212 243 2100



KAMBUI OLUJIMI

*In Case the Wind Will Not Listen*, 2021

watercolor on paper

72 x 107 in (182.9 x 271.8 cm)

AZ#2068

In 1802, Josephine and Napoleon Bonaparte reinstated slavery, eight years after it had been abolished. Some say this was, in part, to help maintain Josephine's family's plantation in Martinique, where she was born and where she returned after her divorce from Napoleon. After she died, Napoleon commissioned a statue of Joséphine that was installed in Martinique in 1859.

In 1991, the head was removed and the statue symbolically splattered in red paint. While working on this watercolor, the entire monument was destroyed.



# ANNA ZORINA GALLERY

532 W 24 ST NYC NY 10011 TEL 212 243 2100



KAMBUI OLUJIMI

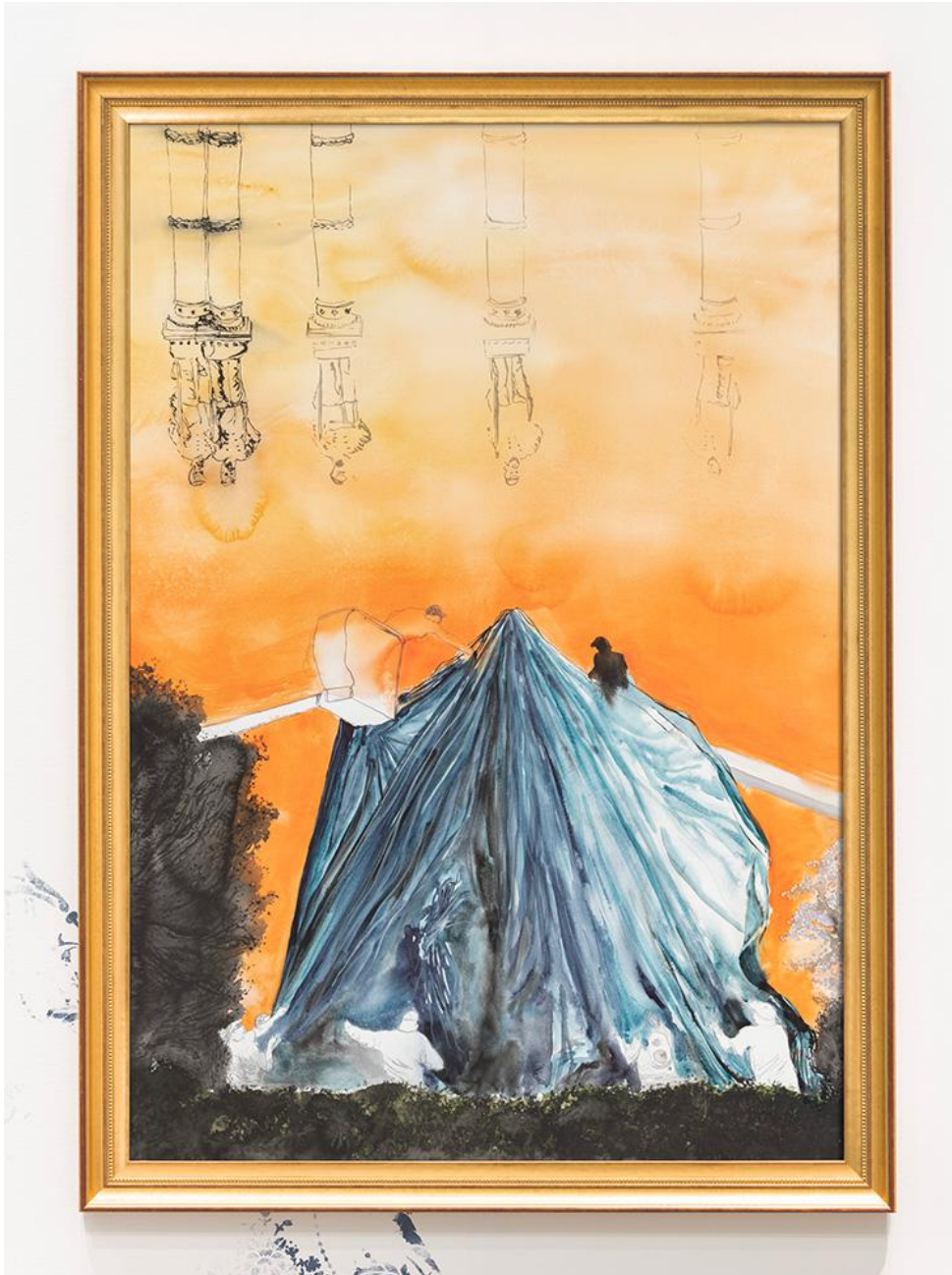
*Canopy*, 2021

watercolor on paper

41.125 x 59.75 in (104.5 x 151.8 cm)

AZ#2063

**ANNA ZORINA GALLERY**  
532 W 24 ST NYC NY 10011 TEL 212 243 2100



KAMBUI OLUJIMI  
*A Sunken Sun*, 2021  
watercolor on paper  
41.125 x 59.75 in (104.5 x 151.8 cm)  
AZ#2064



# ANNA ZORINA GALLERY

532 W 24 ST NYC NY 10011 TEL 212 243 2100



KAMBUI OLUJIMI

*The Hand of The King*, 2021

watercolor on paper

42.25 x 43.75 in (107.3 x 111.1 cm)

AZ#2065

On February 5, 1885, Leopold II, the Belgian Emperor, along with a group of investors established personal rule over The Congo Free State, as it was named. In his time as ruler, he exploited the Congolese to extract and export rubber; he was known for encouraging his army to chop off the hands of the Congolese who did not make their quota. In 2004, the hand and lower arm was removed from a bronze statue of a Congolese man gazing at this statue of King Leopold II in reference to this common punishment. In this image it is Leopold who has no hand. It is believed that up to 15 million people died during Leopold's rule.



# ANNA ZORINA GALLERY

532 W 24 ST NYC NY 10011 TEL 212 243 2100



KAMBUI OLUJIMI

*Late Stage Love Affairs*, 2021

watercolor on paper

40.75 x 44.5 in (103.5 x 113 cm)

AZ#2066

In places like Charlottesville, monuments have been covered with large tarps or their faces obscured as a rejection of their continued colonial presence in the landscape.

# ANNA ZORINA GALLERY

532 W 24 ST NYC NY 10011 TEL 212 243 2100



KAMBUI OLUJIMI

*Forgetful Long Goodbyes*, 2021

watercolor on paper

44 x 45.75 in (111.8 x 116.2 cm)

AZ#2067

Over the course of the last five years, numerous Confederate monuments have been removed, spawning a dialogue around memory in American history and how we might confront our nation's violent and colonial past.



ANNA ZORINA GALLERY  
532 W 24 ST NYC NY 10011 TEL 212 243 2100



KAMBUI OLUJIMI  
*'Member Me, 2021*  
ceramic, wax  
2.5 x 3.75 x 5.75 in (6.4 x 9.5 x 14.6 cm)  
AZ#2069

**ANNA ZORINA GALLERY**  
532 W 24 ST NYC NY 10011 TEL 212 243 2100





**ANNA ZORINA GALLERY**  
532 W 24 ST NYC NY 10011 TEL 212 243 2100



**ANNA ZORINA GALLERY**  
532 W 24 ST NYC NY 10011 TEL 212 243 2100





# ANNA ZORINA GALLERY

532 W 24 ST NYC NY 10011 TEL 212 243 2100



**ANNA ZORINA GALLERY**  
532 W 24 ST NYC NY 10011 TEL 212 243 2100





**ANNA ZORINA GALLERY**  
532 W 24 ST NYC NY 10011 TEL 212 243 2100



**KAMBUI OLUJIMI**

*Fuck Around Findout (Word is Bond), 2021*

ceramic, wax

3.25 x 4 x 4.5 in (8.3 x 10.2 x 11.4 cm) Upper set

3.25 x 4 x 3.75 in (8.3 x 10.2 x 9.5 cm) Lower set

AZ#2070

# ANNA ZORINA GALLERY

532 W 24 ST NYC NY 10011 TEL 212 243 2100





# ANNA ZORINA GALLERY

532 W 24 ST NYC NY 10011 TEL 212 243 2100



**ANNA ZORINA GALLERY**  
532 W 24 ST NYC NY 10011 TEL 212 243 2100



KAMBUI OLUJIMI  
*Fuck Around Find Out (Hand to God)*, 2021  
ceramic, wax  
8.5 x 4 x 4 in (21.6 x 10.2 x 10.2 cm)  
AZ#2071



**ANNA ZORINA GALLERY**  
532 W 24 ST NYC NY 10011 TEL 212 243 2100



# ANNA ZORINA GALLERY

532 W 24 ST NYC NY 10011 TEL 212 243 2100





# ANNA ZORINA GALLERY

532 W 24 ST NYC NY 10011 TEL 212 243 2100



# ANNA ZORINA GALLERY

532 W 24 ST NYC NY 10011 TEL 212 243 2100





# ANNA ZORINA GALLERY

532 W 24 ST NYC NY 10011 TEL 212 243 2100



# ANNA ZORINA GALLERY

532 W 24 ST NYC NY 10011 TEL 212 243 2100





# ANNA ZORINA GALLERY

532 W 24 ST NYC NY 10011 TEL 212 243 2100



**ANNA ZORINA GALLERY**  
532 W 24 ST NYC NY 10011 TEL 212 243 2100





# ANNA ZORINA GALLERY

532 W 24 ST NYC NY 10011 TEL 212 243 2100



KAMBUI OLUJIMI

*I Told You Once*, 2021

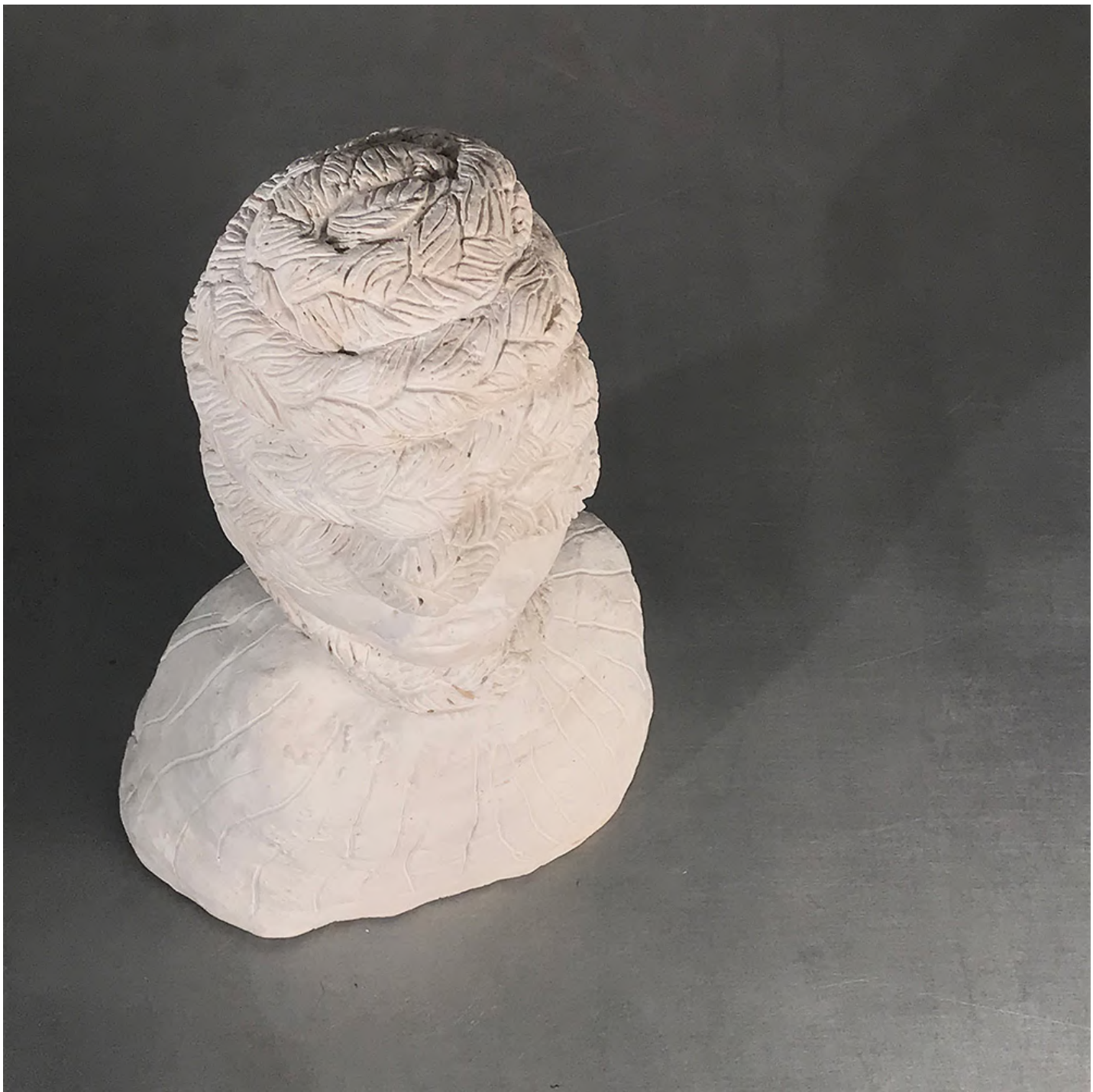
ceramic, wax

7.25 x 5.125 x 4.5 in (18.4 x 13 x 11.4 cm)

AZ#2086

# ANNA ZORINA GALLERY

532 W 24 ST NYC NY 10011 TEL 212 243 2100





# ANNA ZORINA GALLERY

532 W 24 ST NYC NY 10011 TEL 212 243 2100

